



**MST TELEHANDLERS**  
The Future Constructor

| [www.mst-tr.com](http://www.mst-tr.com)



**MST**



The results of engineering excellence, production with high technology and well-accepted components by worldwide created six different models of MST Telehandler range.

MST Telehandlers are ready to serve the market in agriculture, construction, industry and recycling sectors.

MST is the right choice.





## ENGINE

1100 series Perkins engines with high torque at low RPMs provide superior performance in addition to low fuel consumption against its equivalents. Easy servicing, low maintenance costs and worldwide spare parts availability are outstanding features of Perkins engine.

## TRASMISSION

The variable displacement axial piston pump in combination with a two-stage gear box coupled with a bent-axis variable displacement hydromotor gives excellent tractive force and manoeuvrability.

The driving comfort and performance with internationally recognized components from Rexroth and Dana are maximized.

**MST**



## FRAME AND TELESCOPIC BOOM

Thanks to 3D design programs and analysis softwares that make us produce robust and ever-lasting metallic structures with high-tech production capabilities.



## MAINTENANCE

Easy access to servicing internal components.

## INTERNATIONAL TECHNICAL SUPPORT

Fully equipped and experienced after sales service network all around the world.

A wide range of spare parts stock available.



## MAXIMUM COMFORT FOR THE OPERATOR



•Steering wheel adjustable in all directions



•Multifunctionel, ergonomic and userfriendly dashboard



•Audiovisual over load warning system against tipping.



•Three steering mode selection availability with 4 wheel drive

1- 2WS: Two wheel steer  
2- 4WS: Four wheel steer (circle)  
3- Crab steer



• 2 different multifunctional and easy use joystick system.

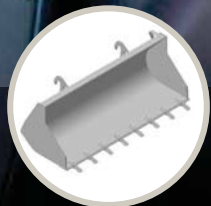


•Drawbar at the back for trailer use.



- MST telehandler cab with ROPS & FOPS approval.
- Super ball round visibility enhances the operator's work performance.
- Comfortable and ergonomic operator seat.
- Stereo Radio ñ CD player.
- Optional air conditioner system.

**Attachments:** A wide range of attachments are available.



1 m³ bucket with teeth



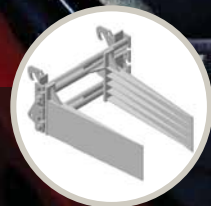
1 m³ bucket without teeth



2.5 m³ bucket for light materials



2 m³ bucket for light materials



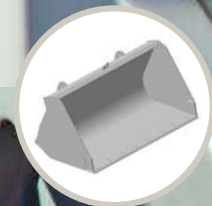
Bale Clamp



Palette Forks



Basket



1 m³ bucket without teeth (in lesser width than wheels)

A red and white MST telehandler is shown in a large warehouse filled with stacks of white wool bales. The telehandler's telescopic boom is extended, and it is holding a black pallet. The machine has "MST" and "ST835" written on it. The warehouse has a high ceiling with a steel truss structure and skylights. The floor is concrete with some tire tracks.

## MST TELEHANDLERS FOR AGRICULTURAL SECTOR SUPERIOR MANOEUVARIBILITY AND PERFORMANCE

- MST ST 7.40 and 8.35 models having compact frames provide superior manoeuvrability to the operators to be able work even in the narrowest areas.
- A wide range of attachments applicable in various working environments.
- Telescopic boom provides quick working capability for loading & unloading operations.
- 100 hp turbo diesel engine offers a low fuel consumption with high stowing and traction power.

**MST**





## REVERSE FAN SYSTEM

In dusty working environment, cleaning of the radiator becomes easier by the help of Reverse Fan System. The system which is controlled from cabin inside turns the radiator fan in reverse direction to throw out materials; like dust or cotton particles which cause dropping the radiator colling efficiency.

**PRACTICAL AND EFFECTIVE  
SOLUTIONS FOR CONSTRUCTION,  
INDUSTRY AND RECYCLING SECTORS**



**MST**



- The complete range of MST telehandlers offer all solutions of the requirements in a wide range of applications from farms to construction sites, from ports to warehouses.


- From 7 to 17 meters, MST telehandlers provide high manoeuvrability with ergonomic controls, comfortable and safe cab for the operator and total visibility of the field of action.



- One machine which can be equipped with various attachments gives to the operator a multifunctional use in all sites of operating.

- Small models are capable to work in containers. Thanks to their low frames.



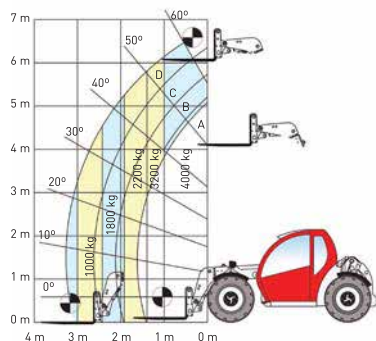
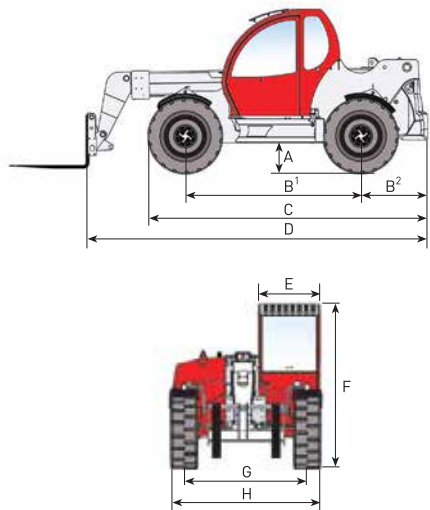
- 
- A red and white MST 5T195 telehandler is shown in a warehouse setting, lifting a yellow pallet. The telehandler's boom is extended high into the air, and the pallet is suspended from its forks. The background consists of a large stack of yellow pallets, each labeled 'YTONG'. The sky is clear and blue. The MST logo is visible on the boom and the side of the telehandler's body.
- High manoeuvrability in the narrow places
  - Wide visibility
  - Great steering capability in all conditions
  - Comfortable and ergonomic cab
  - Easy control of all functions and safety systems inside the cab
  - Simplicity on the control
  - Various attachments
  - Easy maintenance
  - Low fuel consumption

**MST**



**MST TELEHANDLERS  
REAL POWER  
&  
PERFORMANCE**

## MST ST 7.40



ENGINE	
Engine	PERKINS 1104C-44T
Max. Power	75 Kw (100 HP) 2200 rpm
Type	Four stroke, diesel engine
Cylinder number and layout	4 cylinder, in line
Displacement	4490 cm³
Cooling system	Water

PERFORMANCE	
Max. lifting capacity	4,000 kg
Max. lifting capacity at max. reach	3,200 kg
Capacity at max. boom extension	1000 kg
Max. lifting height	6.35 m
Max. horizontal boom extension	3.30 m
Distance between the load center and front axle at max. Height	0.40 m
Tilt angle	120°
Digging force	4,550 daN
Traction force	8,100 daN
Gradeability	74%
Machine weight (empty)	7,360 kg
Max. speed	40 km/h

TRANSMISSION	
Transmission	Axial piston variable displacement hydrostatic pump
Hydraulic motor	Axial piston variable displacement motor
Reversing gear	Electro-hydraulic inching pedal for controlled forward movement, servo controlled two speed gear box

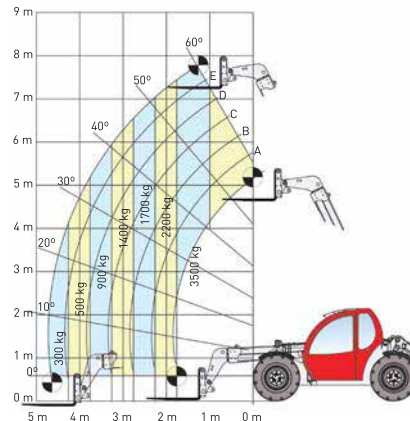
DIFFERENTIAL - AXLES	
Axles	2
Driving mode	4WS/Crab steer/2WS
Front Axle	Rigid
Rear Axle	Oscillating
Servise Brake	Oil bath on the 4 wheels with double hydraulic system and servo brake
Park Brake	Negative parking brake

HYDRAULIC SYSTEM	
Pump Capacity	100lt/1'
Max. working pressure	230 bar
Control valve with joystick	3 in 1

CAPACITIES	
Hydraulic tank	90
Fuel tank	60

TYRES	
Tyres	405/70R20 (16.0/70-20)

## MST ST 8.35



ENGINE	
Engine	PERKINS 1104C-44T
Max. Power	75 Kw (100 HP) 2200 rpm
Type	Four stroke, diesel engine
Cylinder number and layout	4 cylinder, in line
Displacement	4490 cm³
Cooling system	Water

PERFORMANCE	
Max. lifting capacity	3,500 kg
Max. lifting capacity at max. reach	3,000 kg
Capacity at max. boom extension	300 kg
Max. lifting height	7.80 m
Max. horizontal boom extension	4.60 m
Distance between the load center and front axle at max. Height	1.50 m
Tilt angle	120°
Digging force	4,550 daN
Traction force	8,020 daN
Gradeability	74%
Machine weight (empty)	7,750 kg
Max. speed	40 km/h

TRANSMISSION	
Transmission	Axial piston variable displacement hydrostatic pump
Hydraulic motor	Axial piston variable displacement motor
Reversing gear	Electro-hydraulic inching pedal for controlled forward movement, servo controlled two speed gear box

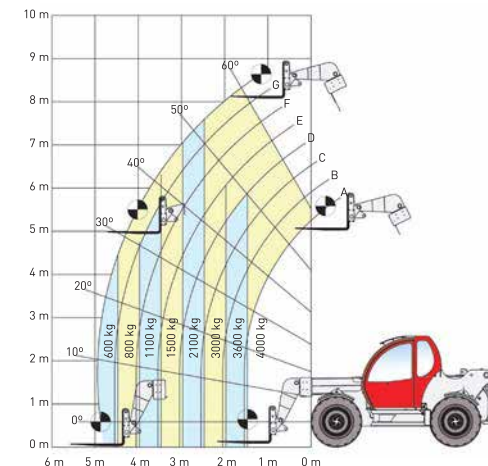
DIFFERENTIAL - AXLES	
Axles	2
Driving mode	4WS/Crab steer/2WS
Front Axle	Rigid
Rear Axle	Oscillating
Servise Brake	Oil bath on the 4 wheels with double hydraulic system and servo brake
Park Brake	Negative parking brake

HYDRAULIC SYSTEM	
Pump Capacity	100lt/1'
Max. working pressure	230 bar
Control valve with joystick	3 in 1

CAPACITIES	
Hydraulic tank	90
Fuel tank	60

TYRES	
Tyres	405/70R20 (16.0/70-20)

## MST ST 9.40



ENGINE	
Engine	PERKINS 1104C-44T
Max. Power	75 Kw (100 HP) 2200 rpm
Type	Four stroke, diesel engine
Cylinder number and layout	4 cylinder, in line
Displacement	4490 cm³
Cooling system	Water

PERFORMANCE	
Max. lifting capacity	4,000 kg
Max. lifting capacity at max. reach	3,000 kg
Capacity at max. boom extension	600 kg
Max. lifting height	8.70 m
Max. horizontal boom extension	4.90 m
Distance between the load center and front axle at max. Height	1.20 m
Tilt angle	135°
Digging force	4,550 daN
Traction force	9,970 daN
Gradeability	74%
Machine weight (empty)	9,980 kg
Max. speed	30 km/h

TRANSMISSION	
Transmission	Axial piston variable displacement hydrostatic pump
Hydraulic motor	Axial piston variable displacement motor
Reversing gear	Electro-hydraulic inching pedal for controlled forward movement, servo controlled two speed gear box

DIFFERENTIAL - AXLES	
Axles	2
Driving mode	4WS/Crab steer/2WS
Front Axle	Rigid
Rear Axle	Oscillating
Servise Brake	Oil bath on the 4 wheels with double hydraulic system and servo brake
Park Brake	Negative parking brake

HYDRAULIC SYSTEM	
Pump Capacity	100lt/1'
Max. working pressure	230 bar
Control valve with joystick	3 in 1

CAPACITIES	
Hydraulic tank	150
Fuel tank	120

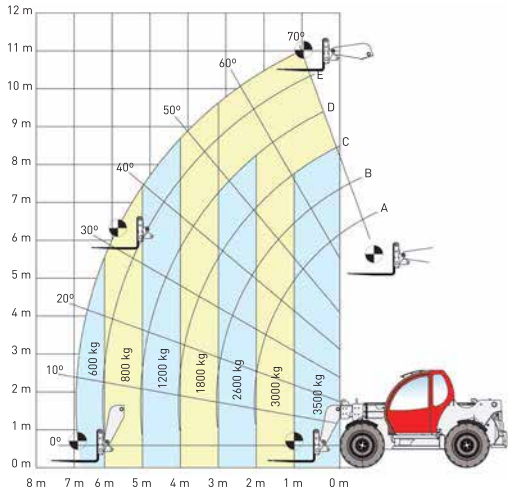
TYRES	
Tyres	405/70R24 (16.0/70-24)

### SIZES ST7.40 ST8.35 ST9.35/9.40

A	320	320	460
B¹	2700	2700	2750
B²	790	790	1050
C	4000	4000	4400
D	4530	5230	5370
E	950	950	950
F	2100	2100	2540
G	1655	1655	1920
H	2070	2070	2345
I	4800	5400	5369
J	4000	4000	4300
K	1700	1700	1745

Sizes mm type

## MST ST 11.35



ENGINE	
Engine	PERKINS 1104C-44T
Max. Power	75 Kw (100 HP) 2200 rpm
Type	Four stroke, diesel engine
Cylinder number and layout	4 cylinder, in line
Displacement	4490 cm <sup>3</sup>
Cooling system	Water

PERFORMANCE	
Max. lifting capacity	3.500 kg
Max. lifting capacity at max. reach	2.600 kg
Capacity at max. boom extension	600 kg
Max. lifting height	11.00 m
Max. horizontal boom extension	6.90 m
Distance between the load center and front axle at max. Height	0.80 m
Tilt angle	135°
Digging force	4,550 daN
Traction force	9,900 daN
Gradeability	74%
Machine weight (empty)	10,380 kg
Max. speed	30 km/h

TRANSMISSION	
Transmission	Axial piston variable displacement hydrostatic pump
Hydraulic motor	Axial piston variable displacement motor
Reversing gear	Electro-hydraulic inching pedal for controlled forward movement, servo controlled two speed gear box

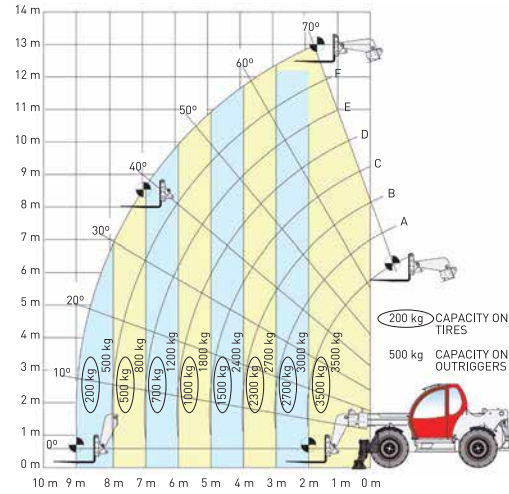
DIFFERENTIAL - AXLES	
Axles	2
Driving mode	4WS/Crab steer/2WS
Front Axle	Rigid
Rear Axle	Oscillating
Servise Brake	Oil bath on the 4 wheels with double hydarulic system and servo brake
Park Brake	Negative parking brake

HYDRAULIC SYSTEM	
Pump Capacity	100l/1'
Max. working pressure	230 bar
Control valve with joystick	4 in 1

CAPACITIES	
Hydraulic tank	150
Fuel tank	120

TYRES	
Tyres	405/70R24 (16.0/70-24)

## MST ST 13.35



ENGINE	
Engine	PERKINS 1104C-44T
Max. Power	75 Kw (100 HP) 2200 rpm
Type	Four stroke, diesel engine
Cylinder number and layout	4 cylinder, in line
Displacement	4490 cm <sup>3</sup>
Cooling system	Water

PERFORMANCE	
Max. lifting capacity	3.500 kg
Max. lifting capacity at max. reach	2.700 kg
Capacity at max. boom extension	200 kg
Max. lifting height	13.00 m
Max. horizontal boom extension	9.00 m
Distance between the load center and front axle at max. Height	1.70 m
Tilt angle	135°
Digging force	4,550 daN
Traction force	10,500 daN
Gradeability	74%
Machine weight (empty)	11,200 kg
Max. speed	30 km/h

TRANSMISSION	
Transmission	Axial piston variable displacement hydrostatic pump
Hydraulic motor	Axial piston variable displacement motor
Reversing gear	Electro-hydraulic inching pedal for controlled forward movement, servo controlled two speed gear box

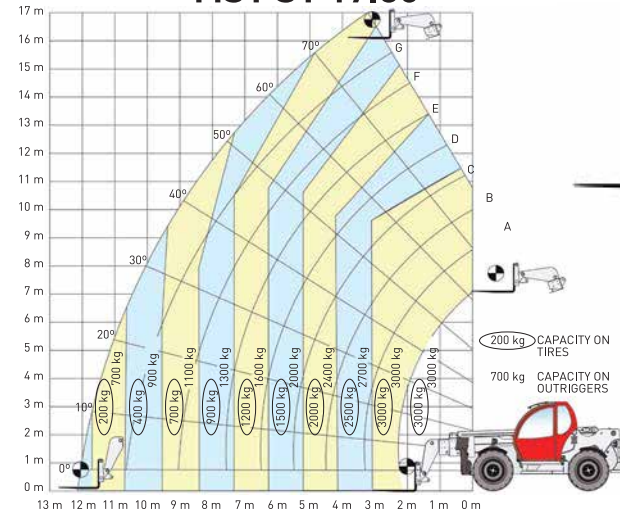
DIFFERENTIAL - AXLES	
Axles	2
Driving mode	4WS/Crab steer/2WS
Front Axle	Rigid
Rear Axle	Oscillating
Servise Brake	Oil bath on the 4 wheels with double hydarulic system and servo brake
Park Brake	Negative parking brake

HYDRAULIC SYSTEM	
Pump Capacity	100l/1'
Max. working pressure	230 bar
Control valve with joystick	4 in 1

CAPACITIES	
Hydraulic tank	150
Fuel tank	120

TYRES	
Tyres	405/70R24 (16.0/70-24)

## MST ST 17.30



ENGINE	
Engine	PERKINS 1104C-44T
Max. Power	75 Kw (100 HP) 2200 rpm
Type	Four stroke, diesel engine
Cylinder number and layout	4 cylinder, in line
Displacement	4490 cm <sup>3</sup>
Cooling system	Water

PERFORMANCE	
Max. lifting capacity	3.000 kg
Max. lifting capacity at max. reach	1.200 kg
Capacity at max. boom extension	700 kg
Max. lifting height	16.30 m
Max. horizontal boom extension	12.30 m
Distance between the load center and front axle at max. Height	3.00 m
Tilt angle	135°
Digging force	4,550 daN
Traction force	10,700 daN
Gradeability	74%
Machine weight (empty)	12,220 kg
Max. speed	30 km/h

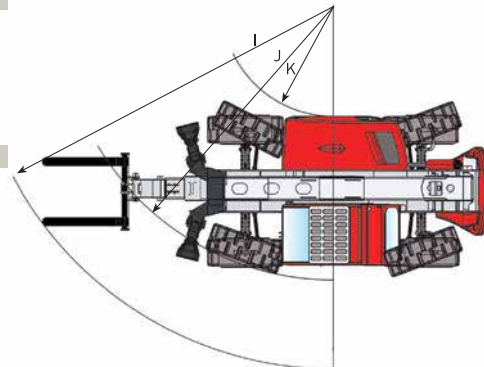
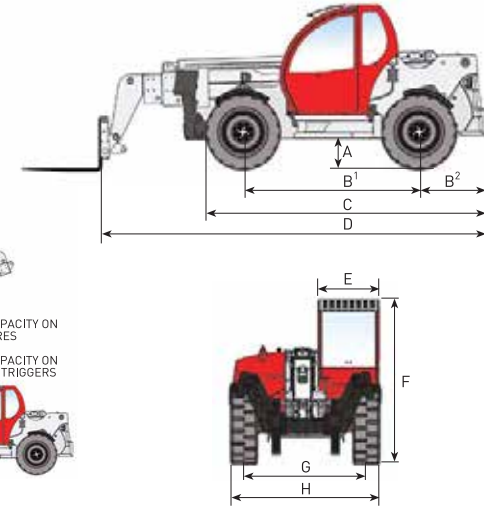
TRANSMISSION	
Transmission	Axial piston variable displacement hydrostatic pump
Hydraulic motor	Axial piston variable displacement motor
Reversing gear	Electro-hydraulic inching pedal for controlled forward movement, servo controlled two speed gear box

DIFFERENTIAL - AXLES	
Axles	2
Driving mode	4WS/Crab steer/2WS
Front Axle	Rigid
Rear Axle	Oscillating
Servise Brake	Oil bath on the 4 wheels with double hydarulic system and servo brake
Park Brake	Negative parking brake

HYDRAULIC SYSTEM	
Pump Capacity	100l/1'
Max. working pressure	230 bar
Control valve with joystick	4 in 1

CAPACITIES	
Hydraulic tank	150
Fuel tank	120

TYRES	
Tyres	405/70R24 (16.0/70-24)



SIZES	ST11.35	ST13.35	ST17.30
A	460	460	460
B <sup>1</sup>	2750	2750	2750
B <sup>2</sup>	1050	1050	1050
C	4400	4400	4400
D	5050	5795	6200
E	950	950	950
F	2540	2540	2540
G	1920	1920	1920
H	2345	2345	2345
I	5180	5694	5694
J	4300	4300	4300
K	1745	1745	1745

Sizes mm type.



①

The pictures and specifications given in this catalog may differ according to different models. MST Construction Agriculture Machinery Industry Trade Inc. reserves the right to make changes on its products and their specifications without prior notice.

## MST CONSTRUCTION AGRICULTURE MACHINERY INDUSTRY TRADE INC.

www.mst-tr.com e-mail: export@mst-tr.com

### HEAD OFFICE

Hürriyet Mah. Yakacık Kuzey D-100 Yanyol No:49/1 Kartal İstanbul TURKEY Tel: +90 216 453 04 00 pbx Fax: +90 216 453 04 01

### FACTORY

4. Organize Sanayi Bölgesi Başpınar Gaziantep TURKEY Tel: +90 342 357 00 33 Fax: +90 342 357 00 46 - 32

